

School Evidence Statement Analysis



CONFIDENTIAL - DO NOT DISTRIBUTE

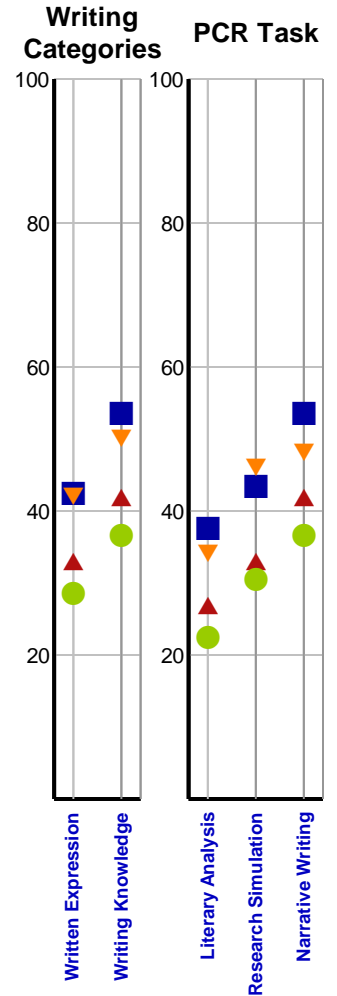
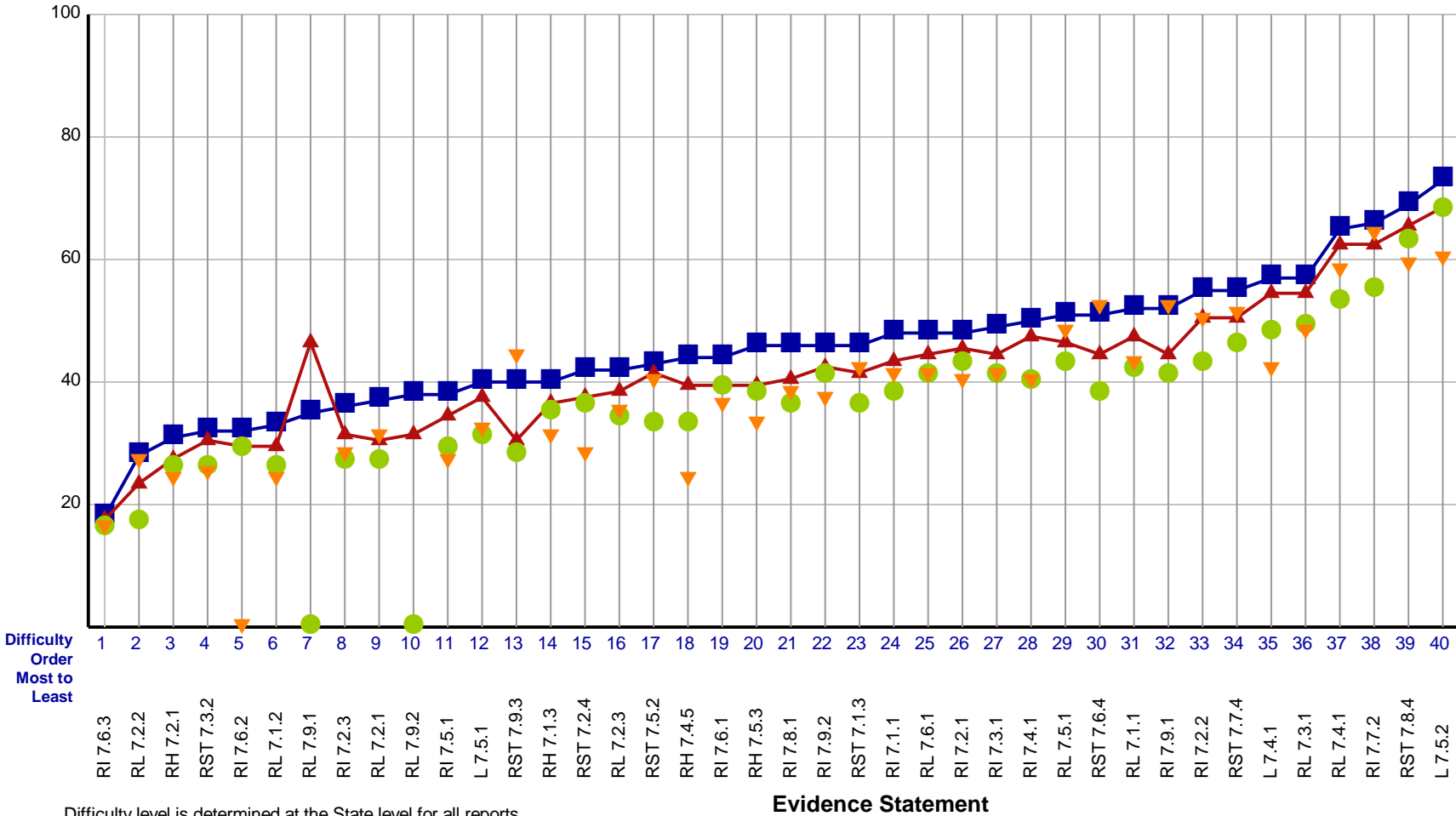
SAMPLE SCHOOL
SAMPLE DISTRICT
NEW MEXICO

ENGLISH LANGUAGE ARTS / LITERACY Grade 7 Assessment, Spring 2017

- ▲ Cross-State
- State
- District
- ▼ School

Students with Valid Scores (90)

Purpose: This report presents the average percent correct by Evidence Statement for school, district, state and Cross-State.



Difficulty level is determined at the State level for all reports
Evidence Statements not tested in district or school are left blank

This report is NOT for public review. Distribution within your school/district must be in accordance with state and federal privacy laws, and local school board policy.

School Evidence Statement Analysis

Grade 7

CONFIDENTIAL - DO NOT DISTRIBUTE

SAMPLE SCHOOL
SAMPLE DISTRICT
NEW MEXICO

This report shows the operational Evidence Statements for the given grade and subject sorted by difficulty

ENGLISH LANGUAGE ARTS / LITERACY Grade 7 Assessment, Spring 2017

Difficulty Order Most to Least	Evidence Statement	Common Core State Standard(s)	Domain	School Student Count
1	RI 7.6.3	RI.7.6	Reading: Informational Text	27
2	RL 7.2.2	RL.7.2	Reading: Literature	90
3	RH 7.2.1	RH.6-8.2	Reading: History/Social Studies	27
4	RST 7.3.2	RST.6-8.3	Reading: Science & Technical Subjects	64
5	RI 7.6.2	RI.7.6	Reading: Informational Text	1
6	RL 7.1.2	RL.7.1	Reading: Literature	27
7	RL 7.9.1	RL.7.9	Reading: Literature	0
8	RI 7.2.3	RI.7.2	Reading: Informational Text	64
9	RL 7.2.1	RL.7.2	Reading: Literature	90
10	RL 7.9.2	RL.7.9	Reading: Literature	0
11	RI 7.5.1	RI.7.5	Reading: Informational Text	90
12	L 7.5.1	L.7.5	Language	64
13	RST 7.9.3	RST.6-8.9	Reading: Science & Technical Subjects	90
14	RH 7.1.3	RH.6-8.1	Reading: History/Social Studies	63
15	RST 7.2.4	RST.6-8.2	Reading: Science & Technical Subjects	26
16	RL 7.2.3	RL.7.2	Reading: Literature	90
17	RST 7.5.2	RST.6-8.5	Reading: Science & Technical Subjects	90
18	RH 7.4.5	RH.6-8.4	Reading: History/Social Studies	27
19	RI 7.6.1	RI.7.6	Reading: Informational Text	89
20	RH 7.5.3	RH.6-8.5	Reading: History/Social Studies	36
21	RI 7.8.1	RI.7.8	Reading: Informational Text	36
22	RI 7.9.2	RI.7.9	Reading: Informational Text	27
23	RST 7.1.3	RST.6-8.1	Reading: Science & Technical Subjects	90
24	RI 7.1.1	RI.7.1	Reading: Informational Text	90
25	RL 7.6.1	RL.7.6	Reading: Literature	90
26	RI 7.2.1	RI.7.2	Reading: Informational Text	90
27	RI 7.3.1	RI.7.3	Reading: Informational Text	90
28	RI 7.4.1	RI.7.4	Reading: Informational Text	90
29	RL 7.5.1	RL.7.5	Reading: Literature	90
30	RST 7.6.4	RST.6-8.6	Reading: Science & Technical Subjects	90
31	RL 7.1.1	RL.7.1	Reading: Literature	90
32	RI 7.9.1	RI.7.9	Reading: Informational Text	26
33	RI 7.2.2	RI.7.2	Reading: Informational Text	63
34	RST 7.7.4	RST.6-8.7	Reading: Science & Technical Subjects	26
35	L 7.4.1	L.7.4	Language	90
36	RL 7.3.1	RL.7.3	Reading: Literature	90
37	RL 7.4.1	RL.7.4	Reading: Literature	90
38	RI 7.7.2	RI.7.7	Reading: Informational Text	64
39	RST 7.8.4	RST.6-8.8	Reading: Science & Technical Subjects	27
40	L 7.5.2	L.7.5	Language	90

Evidence Statements: <http://www.parc-assessment.org/assessments/test-design/ela-literacy/test-specifications-documents>

Common Core State Standards: <http://www.corestandards.org/>

This report is NOT for public review. Distribution within your school/district must be in accordance with state and federal privacy laws, and local school board policy.