

School Evidence Statement Analysis



CONFIDENTIAL - DO NOT DISTRIBUTE

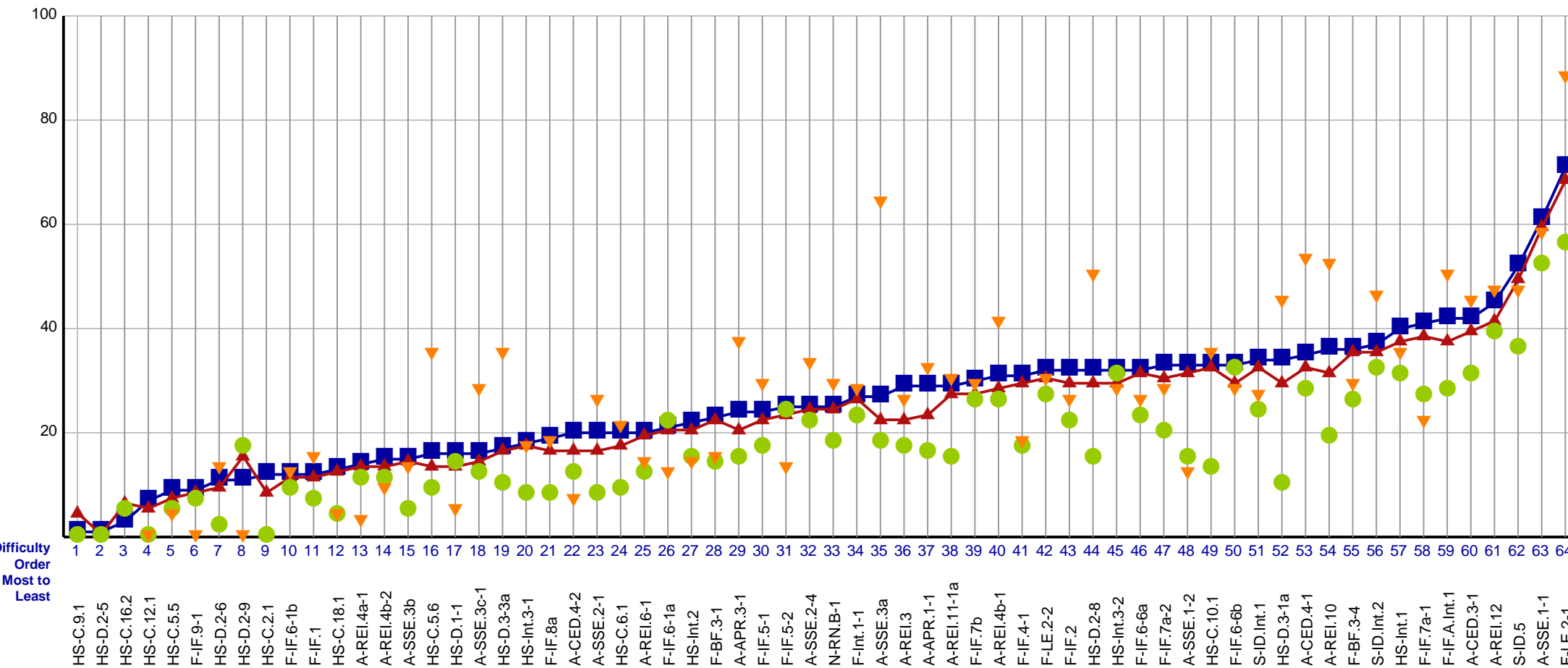
SAMPLE SCHOOL
SAMPLE DISTRICT
NEW MEXICO

MATHEMATICS Algebra I Assessment, Spring 2017

- ▲ Cross-State
- State
- District
- ▼ School

Students with Valid Scores (46)

Purpose: This report presents the average percent correct by Evidence Statement for school, district, state and Cross-State.



Difficulty level is determined at the State level for all reports

Evidence Statements not tested in district or school are left blank

This report is NOT for public review. Distribution within your school/district must be in accordance with state and federal privacy laws, and local school board policy.

School Evidence Statement Analysis

Algebra I

CONFIDENTIAL - DO NOT DISTRIBUTE

SAMPLE SCHOOL
SAMPLE DISTRICT
NEW MEXICO

This report shows the operational Evidence Statements for the given grade and subject sorted by difficulty

MATHEMATICS

Algebra I Assessment, Spring 2017

Difficulty Order Most to Least	Evidence Statement	Common Core State Standard(s)	Domain	School Student Count
1	HS-C.9.1	OGL	Modeling and Reasoning	0
2	HS-D.2-5	OGL	Modeling and Reasoning	0
3	HS-C.16.2	OGL	Modeling and Reasoning	0
4	HS-C.12.1	OGL	Modeling and Reasoning	15
5	HS-C.5.5	OGL	Modeling and Reasoning	16
6	F-IF.9-1	HSF.IF.C.9	Functions	15
7	HS-D.2-6	OGL	Modeling and Reasoning	46
8	HS-D.2-9	OGL	Modeling and Reasoning	1
9	HS-C.2.1	OGL	Modeling and Reasoning	0
10	F-IF.6-1b	HSF.IF.B.6	Functions	32
11	F-IF.1	HSF.IF.A.1	Functions	46
12	HS-C.18.1	SHK	Modeling and Reasoning	46
13	A-REI.4a-1	HSA.REI.B.4.A	Algebra	29
14	A-REI.4b-2	HSA.REI.B.4.B	Algebra	32
15	A-SSE.3b	HSA.SSE.B.3.B	Algebra	15
16	HS-C.5.6	OGL	Modeling and Reasoning	31
17	HS-D.1-1	SHK	Modeling and Reasoning	46
18	A-SSE.3c-1	HSA.SSE.B.3.C	Algebra	14
19	HS-D.3-3a	OGL	Modeling and Reasoning	18
20	HS-Int.3-1	HSA.CED.A.1 HSF.IF.B.4 HSF.IF.B.6 HSF.LE.A.2	Algebra Functions	13
21	F-IF.8a	HSF.IF.C.8.A	Functions	30
22	A-CED.4-2	HSA.CED.A.4	Algebra	28
23	A-SSE.2-1	HSA.SSE.A.2	Algebra	30
24	HS-C.6.1	OGL	Modeling and Reasoning	46
25	A-REI.6-1	HSA.REI.C.6	Algebra	17
26	F-IF.6-1a	HSF.IF.B.6	Functions	16
27	HS-Int.2	HSA.CED.A.1 HSF.IF.C.7 multiple	Algebra Functions	32
28	F-BF.3-1	HSF.BF.B.3	Functions	46
29	A-APR.3-1	HSA.APR.B.3	Algebra	46
30	F-IF.5-1	HSF.IF.B.5	Functions	31
31	F-IF.5-2	HSF.IF.B.5	Functions	15
32	A-SSE.2-4	HSA.SSE.A.2	Algebra	46
33	N-RN.B-1	HSN.RN.B.3	Number and Quantity	46
34	F-Int.1-1	Multiple	Functions	46
35	A-SSE.3a	HSA.SSE.B.3.A	Algebra	17
36	A-REI.3	HSA.REI.B.3	Algebra	46
37	A-APR.1-1	HSA.APR.A.1	Algebra	46
38	A-REI.11-1a	HSA.REI.D.11	Algebra	46

continued

Evidence Statements: <http://www.parc-assessment.org/assessments/test-design/mathematics/math-test-specifications-documents>

Common Core State Standards: <http://www.corestandards.org/>

This report is NOT for public review. Distribution within your school/district must be in accordance with state and federal privacy laws, and local school board policy.

School Evidence Statement Analysis

Algebra I

CONFIDENTIAL - DO NOT DISTRIBUTE

SAMPLE SCHOOL
SAMPLE DISTRICT
NEW MEXICO

This report shows the operational Evidence Statements for the given grade and subject sorted by difficulty

MATHEMATICS

Algebra I Assessment, Spring 2017

Difficulty Order Most to Least	Evidence Statement	Common Core State Standard(s)	Domain	School Student Count
39	F-IF.7b	HSF.IF.C.7.B	Functions	31
40	A-REI.4b-1	HSA.REI.B.4.B	Algebra	31
41	F-IF.4-1	HSF.IF.B.4	Functions	46
42	F-LE.2-2	HSF.LE.A.2	Functions	16
43	F-IF.2	HSF.IF.A.2	Functions	46
44	HS-D.2-8	OGL	Modeling and Reasoning	45
45	HS-Int.3-2	HSA.CED.A.1 HSF.LE.A.2 HSF.LE.B.5	Algebra Functions	16
46	F-IF.6-6a	HSF.IF.B.6	Functions	30
47	F-IF.7a-2	HSF.IF.C.7.A	Functions	28
48	A-SSE.1-2	HSA.SSE.A.1	Algebra	16
49	HS-C.10.1	OGL	Modeling and Reasoning	30
50	F-IF.6-6b	HSF.IF.B.6	Functions	14
51	S-ID.Int.1	Multiple	Statistics & Probability	32
52	HS-D.3-1a	OGL	Modeling and Reasoning	28
53	A-CED.4-1	HSA.CED.A.4	Algebra	46
54	A-REI.10	HSA.REI.D.10	Algebra	46
55	F-BF.3-4	HSF.BF.B.3	Functions	46
56	S-ID.Int.2	HSS.ID.A.1 HSS.ID.A.2 HSS.ID.B.5 HSS.ID.B.6.A HSS.ID.B.6.B	Statistics & Probability	14
57	HS-Int.1	HSA.REI.B.4 HSA.REI.B.4.B HSF.BF.A.1 HSF.IF.C.7.A HSF.IF.C.8.A	Algebra Functions	14
58	F-IF.7a-1	HSF.IF.C.7.A	Functions	18
59	F-IF.A.Int.1	HSF.IF.A.1 HSF.IF.A.2	Functions	46
60	A-CED.3-1	HSA.CED.A.3	Algebra	46
61	A-REI.12	HSA.REI.D.12	Algebra	46
62	S-ID.5	HSS.ID.B.5	Statistics & Probability	46
63	A-SSE.1-1	HSA.SSE.A.1	Algebra	46
64	F-LE.2-1	HSF.LE.A.2	Functions	45

Evidence Statements: <http://www.parc-assessment.org/assessments/test-design/mathematics/math-test-specifications-documents>

Common Core State Standards: <http://www.corestandards.org/>

This report is NOT for public review. Distribution within your school/district must be in accordance with state and federal privacy laws, and local school board policy.